

SHAPING TOMORROW



Heavy Plant Hire

Capability Statement 2024–25

Delta Rent Pty Ltd | ABN 24 116 501 725

Acknowledgement of Country

Delta Rent acknowledges First Nations Australians as the Traditional Owners of the land and sea upon which we work. We recognise their living cultural and natural landscapes and pay our respects to Elders past, present and emerging.

/ Industry Leading Solutions

Delta Rent operates one of the largest earthmoving equipment rental fleets of more than 600 high performance machines in Australia.

Established in Victoria since 2005, we understand that the deployment of heavy plant and equipment is high risk and capital intensive. It also requires specialist skills and operating licences.

600+
high performance machines

6,000
maximum machine hours

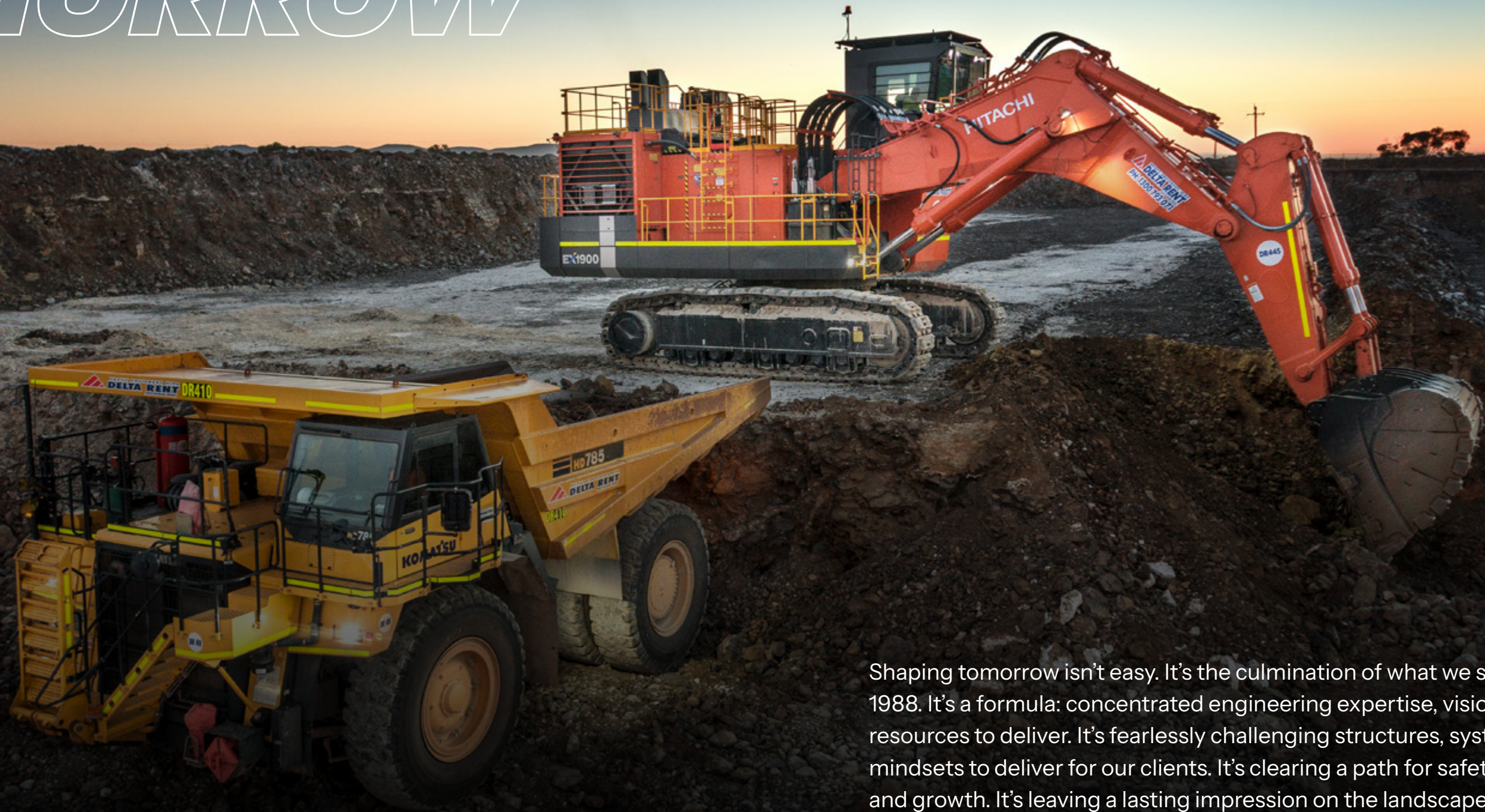
24/7/365
service support

Delta Rent operates Australia wide, with offices in Melbourne, Sydney, Brisbane and Adelaide. We pride ourselves on working closely with clients to understand their project or site specific requirements and to deliver flexible short, medium and long term rental plans. Our fleet is regularly upgraded and meticulously maintained to exacting OEM, regulatory and client specifications, with fixed or mobile maintenance services ensuring maximum productivity.

Why Delta Rent?

- + Experienced and professional sales team for expert advice and analysis
- + 24/7 service 365 days a year
- + New generation, low hour machines – nothing over 6,000 hours
- + Complete fleet packages to suit site production outputs and safety specifications
- + On site workshops for 24/7 servicing
- + OEM backed support, service and technicians
- + Large range of attachments available for hire
- + Fast delivery and rapid response services
- + Full OEM GPS tracking and telematics reporting

SHAPING TOMORROW



Shaping tomorrow isn't easy. It's the culmination of what we started in 1988. It's a formula: concentrated engineering expertise, vision and the resources to deliver. It's fearlessly challenging structures, systems and mindsets to deliver for our clients. It's clearing a path for safety, innovation and growth. It's leaving a lasting impression on the landscape of progress. Shaping tomorrow isn't easy. Shaping tomorrow is in our DNA.

+ Our Vision is to shape the industrial and urban landscapes of tomorrow

+ Our Mission is to understand the project lifecycle better than any other contractor

+ Our Values



People first
No other business practice is more important than the safety of our people.



Think differently
Where others see obstacles, we see opportunities.



Dependable
We refuse to accept anything but the very best we can give to a client and their project.



Determined
We're not just responsible, we're accountable. Every one percent matters.

/ Fleet Overview

Delta Rent enjoys long standing relationships with all heavy machinery OEMs, including Hitachi, Komatsu, Volvo, Deere, Bell and Cat.

Excavators

- + Hitachi and Komatsu 60t - 125t
- + Hitachi, Komatsu and Volvo 30t - 60t
- + Hitachi 8t - 30t



HITACHI ZX360LCH-5

Rigid Rear Dump Trucks

- + HD785 and HD605 Komatsu Rigid Haul Trucks
- + 773 Series Rigid CAT Haul Trucks



KOMATSU HD605-8

Articulated Rear Dump Trucks

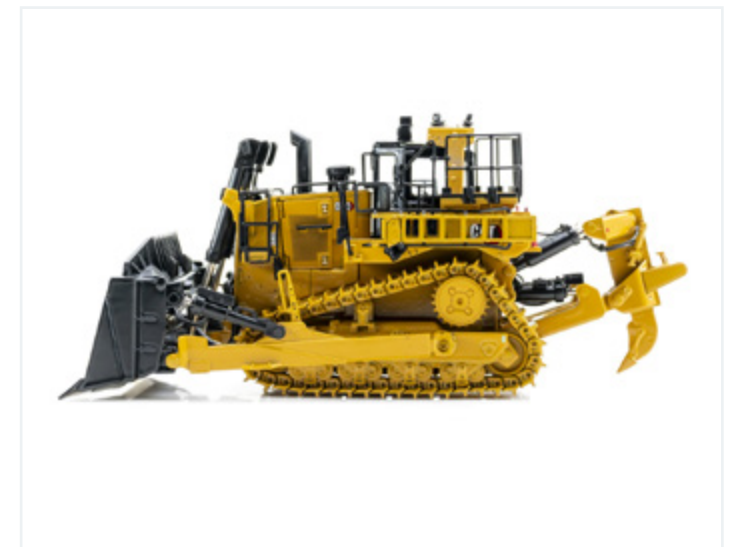
- + Bell Dump Trucks 30t, 40t and 45t
- + Bell and Volvo Dump Trucks 50t



VOLVO A45G

Dozers

- + CAT and Komatsu D6-D11 Dozers



CAT D10T

PARTNERS

HITACHI



VOLVO



KOMATSU



/ Fleet Overview

Wheel Loaders

- + Hitachi, Komatsu and CAT Loaders ZW150 (up to) WA600



KOMATSU WA500-8

Graders

- + John Deere and CAT Graders 14-16m



CAT 140

Compactors

- + CAT 815 and 825



CAT 815K

Site and Road Water Trucks

- + Bell and CAT Rigid/Articulated 24,000L - 40,000L
- + Fuso Road Registered 13,000L

PARTNERS

HITACHI



V O L V O



KOMATSU



/ Fleet Maintenance & Logistics

Delta Rent earthmoving equipment is meticulously maintained to exacting OEM, regulatory and client requirements. Our sophisticated GPS, logistical and (on board) scale and telematic systems track the movement, loads and optimisation of more than 600 trucks and machines across Australia.



Transport

Delta Rent works exclusively with heavy transport operators who are accredited under the National Heavy Vehicle Accreditation Scheme (NHVAS) and who employ NHVR and HVNL compliant policies, procedures and practices.



Ergonomic Controls & Certified ROPs/FOPs

All Delta Rent machines feature ergonomic cabin and controls design as well as fully certified ROP and FOP Structures. Key operating features include multi-lingual LCD/LED cabin displays (with up to 32 Languages) and interior air dust filters.



Fixed & Mobile Maintenance

Delta Rent is renowned for exceptional plant performance standards thanks to a rigorous maintenance regime from a team of highly trained, qualified and experienced technical support and service personnel.



Sustainability Features

New generation hydraulic excavators have the capacity to maintain high performance and productivity while minimising harmful pollutants. Our latest machines can also operate with synthetic and bio diesel, lead free and biodegradable hydraulic oil, and incorporate unique sustainability features such as fully recyclable manufacturing components.

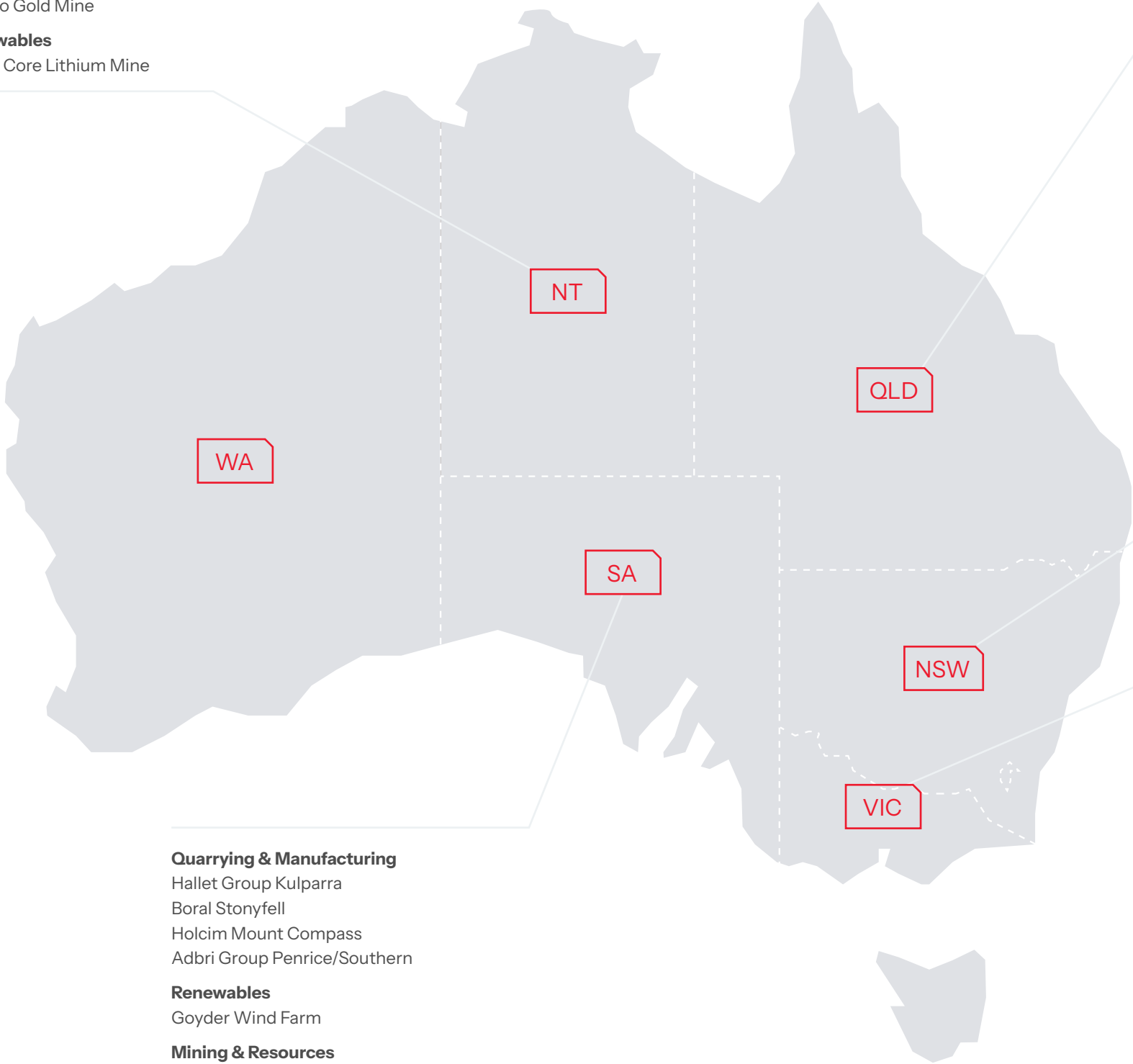
/ Project Portfolio

Mining & Resources

Cosmo Gold Mine

Renewables

Finnis Core Lithium Mine



Renewables

Wambo Wind Farm
Clarke Creek Wind Farm

Mining & Resources

BMA Saraji Mine
Moranbah North Coal Mine

Quarrying & Manufacturing

Boral Dundowran
Hanson Glasshouse
Fulton Hogan Blue Rock

Quarrying & Manufacturing

Boral Seaham/Dunmore
Hanson Kulnura
Holcim Lynwood
Adbri Group Penrose
Transport NSW - Bombo

Renewables

Snowy Hydro 2.0
Flyers Creek Wind Farm
Uungula Wind Farm

Mining & Resources

Glencore Baal Bone
BHP Mount Arthur

Public Infrastructure

Western Sydney Airport
Parframatta Light Rail
Inland Rail Project
M12 Motorway

Public Infrastructure

West Gate Tunnel
Level Crossings Removal
North East Link
Suburban Rail Loop

Mining & Resources

Hazelwood Mine Rehabilitation Project

Renewables

Fluence Energy Hazelwood BESS
Golden Plains Wind Farm
Ryans Corner Wind Farm

Quarrying & Manufacturing

Boral Bacchus Marsh/Deer Park
Holcim Grantville
Hanson Lang Lang
Fulton Hogan Tynong
Barro Group Wyndham Vale

Quarrying & Manufacturing

Hallet Group Kulparra
Boral Stonyfell
Holcim Mount Compass
Adbri Group Penrice/Southern

Renewables

Goyder Wind Farm

Mining & Resources

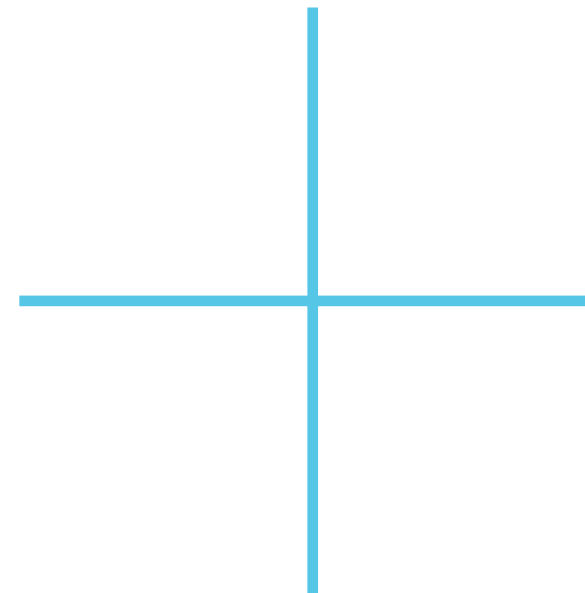
Walga Iron Knob
BHP Olympic Dam



/ Sustainability

As a key division of Delta Group, we apply a triple bottom line approach to our environmental, social and governance (ESG) responsibilities and endeavour to integrate our policies, procedures and work practices across the business, including Delta Rent.

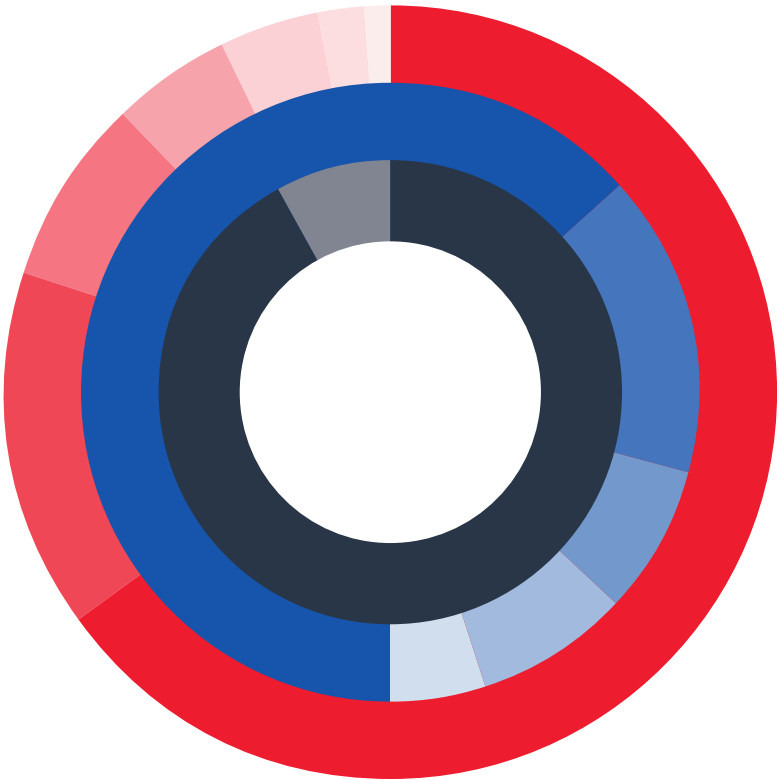
Aspiring to achieve zero harm – to our people, our environment and the communities in which we work – is a fundamental driver of our business and why Delta Group invests heavily in maintaining our social licence to operate and to ensuring the work we undertake has a lasting local, social and environmental legacy.



/ Our People

Our people are what set us apart and why our clients trust us to deliver high risk, complex work programmes on time, on budget and without incident. They don't just benefit from exciting and diverse projects with blue chip clients, they benefit from a culture of collaboration and innovation that allows them to make the most of their remarkable skills and talent.

We appreciate the challenges facing the Australian construction industry in developing a more diverse workforce. Delta Group and all related entities are compliant with the Australian Workplace Gender Equality Act and our talent acquisition strategies are focused on increasing the representation of females at all levels and across all divisions of our business, as well as First Nations Australians, people living with disability, and individuals from entrenched disadvantage.



VIC	65%			
NSW	15%			
QLD	8%			
SA	5%			
WA	4%			
ACT	2%			
NT	1%			
Labourers & Operators	64%	Apprentices & Trainees	4%	
Corporate Services	16%			
Engineers	8%			
Foreman & Supervisors	8%			
Management	5%			
Male	92%	Interns, Cadets & Graduates		
Female	8%	3%		



Con Petropoulos

Founder & Managing Director

Con founded Delta in the late 70s and has been relentless in his pursuit of innovation ever since, especially for better and safer work methods. Renowned for his leadership and the quality of his people, he is still 'hands-on' today in support of major projects, industrial relations and key client relationships.

/ Group Management



Mark Welsh
EXECUTIVE GENERAL MANAGER



Jason Simcocks
EXECUTIVE GENERAL MANAGER



Jatin Rangras
CHIEF FINANCIAL OFFICER



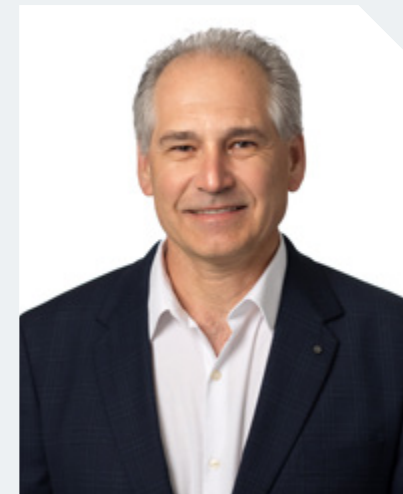
Philip Agius
GENERAL MANAGER RENT



Jason Attard
GENERAL MANAGER CIVIL OPERATIONS (VIC)



Khaled Ayache
MANAGER DEMOLITION OPERATIONS (VIC)



Danny Busatta
GENERAL MANAGER PRE CONSTRUCTION (VIC)



Dominic Santullo
GENERAL MANAGER RECYCLING & LOGISTICS

Delta Group have embedded social procurement practices and processes into our national operations, in accordance with Commonwealth, State and/or Territory policy frameworks.

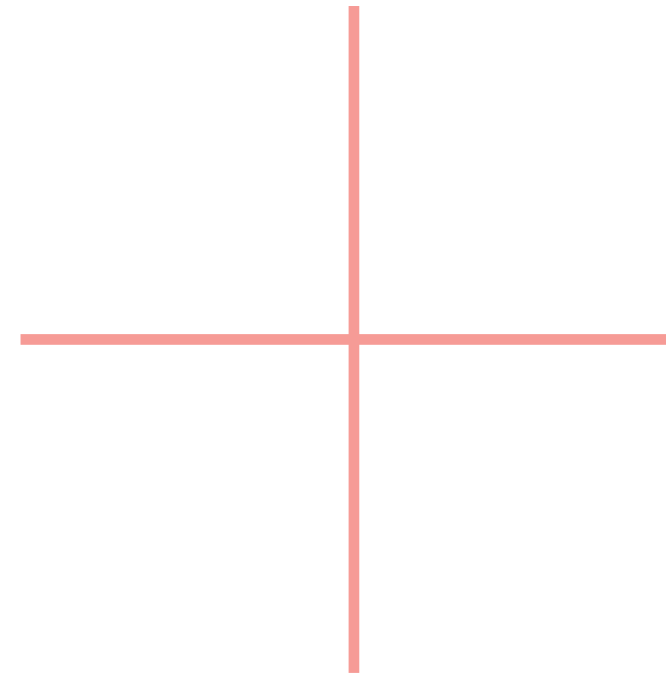


We have identified the following key principles to guide the implementation of our social procurement commitments across our business and in the projects we deliver:

- + Use an evidence-based approach to identify priority groups we believe should have access to opportunities created by each individual project we are delivering
- + Incorporate social and sustainable outcomes that benefit the communities in which we are working into our value-for-money considerations when engaging with suppliers
- + Support the growth and development of the Social Benefit supplier market
- + Encourage our entire supply chain to deliver sustainable and social outcomes
- + Leverage existing Federal, State and Local Government programs to support the delivery of our social procurement commitments
- + Maintain a reporting and governance framework to oversee the implementation of our social procurement plans

Delta Group monitors and reports on project specific social procurement outcomes, including (but not limited to):

- + Local labour workforce breakdown
- + Social benefits supplier expenditure
- + Social benefits supplier workhours
- + Apprentice and trainee workhours
- + Intern, cadet and graduate workhours
- + Female workhours





Widi Ngaruwa

Delta Group is a growth partner of Supply Nation certified contractor, Widi Ngaruwa, representing a majority owned, managed and controlled Aboriginal business. With a mission to provide long term Aboriginal job prospects and trade apprenticeships, as well as to provide clients with a practical and meaningful pathway for engaging Aboriginal Australians and small Aboriginal businesses, Widi Ngaruwa offers NPI building and construction, civil, demolition and remediation services.



Eather Group

Delta Group has forged a close and highly productive commercial partnership with Aboriginal owned and Supply Nation certified cart and disposal contractor, Eather Group in NSW. In addition to contracting haulage and road transport services, Delta Group rents 5,000m2 of land from Eather Group to store plant and equipment and provides support on major project bids as well as project management expertise. Delta subsidiary CMA Contracting also engages Eather Group and Yunanga Civil & Earth for the delivery of specialist industrial project services in the Hunter Valley.



Flicker of Hope

In 2018, Delta Group joined the Petropoulos family as a foundation partner of the Flicker of Hope foundation. Flicker of Hope has been established to raise much needed funds for research into neurofibromatosis (NF) – a genetical disorder that affects up to 10,000 Australians and which causes tumours to grow on nerve endings throughout the body – for which there is no cure. With Delta's support, Flicker of Hope has raised more than \$3.5m to date, with 100% of all funds going directly to essential research into NF.



Port Melbourne Football Club

Established in 1874, the Port Melbourne Football Club – or the “Borough” as it is colloquially known – is one of the oldest football clubs in Australia, with 18 VFL/VFA and VFLW premierships. Since relocating to our Port Melbourne head office and yard in 1993, Delta Group and the Borough have been close neighbours and formalised a sponsorship agreement in 2022 that focused on the women's team in the newly formed VFLW competition – and which celebrated their inaugural premiership in 2023.



UTS Australian Football Club

Since it was formed in 2000, the UTS Australian Football Club – or the “Bats” – has grown to become one of the largest and most successful clubs in Sydney, winning an impressive 16 premierships across multiple grades. Today, the Bats field eleven men's and women's teams and are the biggest club in the Eastern Suburbs. With a shared commitment to excellence and strong links to the next generation of engineering talent, Delta Group found a natural partner in the Bats and committed to a sponsorship of the Club in 2024.

/ Governance

Delta Group is a privately owned company comprising subsidiary entities as well as related entities incorporated and domiciled in Australia.

We are committed to maintaining a high standard of integrity and good corporate governance, including playing a leadership role in setting and articulating corporate governance standards in Australia and for the Australian building and construction sector.

Sustained revenue growth and a strong balance sheet reinforces our capacity to deploy capital in upgrading or expanding our fleet, as well as to offer bank securities, guarantees and/or surety bonds to meet any client or project specific requirement. Delta Group hold the relevant insurances in accordance with best practice risk management and corporate governance protocols.

As the largest contractor of its type in Australia, Delta Group has the financial, organisational and operational capacity to manage hundreds of projects at any one time - metro, regional, remote or marine

Delta Group is proud to play a leadership role in the continuous development of our industry in Australia and is a long standing and active member of peak industry bodies or associations.

- + Civil Contractors Federation
- + Master Builders Association
- + Waste Management Association of Australia
- + Construction Material Processors Association
- + Institute of Quarrying Australia
- + Victorian Transport Association
- + Demolition & Asbestos Industry Association of Victoria
- + Social Traders

Integrated Management System

We maintain triple ISO certified quality, safety and environmental management systems, ISO certified risk management systems, and are accredited under the Australian Government Building & Construction WHS Accreditation Scheme, as well as individual State and Territory Government accreditation and prequalification schemes.

A custom built IMS captures and shares commercial IP from Delta Group project sites across Australia, giving us the capability to aggregate and analyse data relating to quality, health and safety, environmental and risk performance from past and current projects.

The design and function of Delta Way is process-focused through the documentation of knowledge and skills centred on workflows and individual tasks to safely and successfully execute an agreed scope of works.

It is the basis upon which our business and operating divisions function – a carefully structured and formal operations system that has been designed to ensure full compliance with our statutory and regulatory obligations, as well as to:

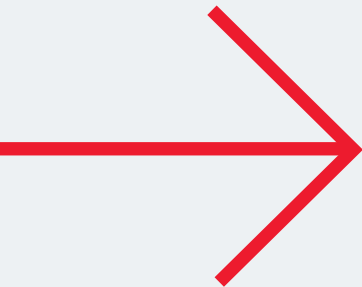
- + Design and implement policy
- + Track and measure performance
- + Establish and describe responsibilities and accountabilities
- + Facilitate continuous improvement

Code of Conduct

Everything we do in our offices and on our project sites centres upon our Code of Conduct which sets out the fundamental rules and values that govern the way we operate as a company. It applies equally to our employees as well as subcontractors and identifies three core elements – working in a safe and sustainable manner; acting openly, fairly and with integrity; and believing in our people and teamwork.

Behavioural Safety

Nothing matters more to us than safety. It is our most important business practice and we demand visible leadership at every stage of a project and from everyone involved. We believe that safe work practices are influenced by behaviour, not authority, which is why we custom built our own *Right First Time* behavioural safety program. *Right First Time* is based on four key values: Safety, Integrity, Teamwork and Excellence. It is dedicated to empowering our people to STOP and THINK about what they are doing, even if they have performed a task hundreds of times before.



Sustainability Reporting

Delta Group and all related entities are compliant with the relevant Commonwealth and State or Territory legislation, as they relate to our diversified contracting services and sustainable business practices.

- + Climate-related financial disclosures
- + Scope 1 and Scope 2 CO² emissions monitoring
- + Green Star and NABERS aligned reporting systems
- + Green Star certified waste transfer facilities
- + Comprehensive waste stream tracking, docketing, tipping and invoicing systems
- + NATA tested and certified eco-products
- + GPS vehicle tracking
- + Licensed landfill and cleanfill disposal

Modern Slavery

Delta Group welcomes the opportunity to join the Australian Government to eliminate modern slavery in global supply chains and to improving the lives of millions of victims around the world. We are committed to challenging ourselves and all of our supply chains at home or abroad. We will remain vigilant for any form of modern slavery and strive to improve our management systems so as to maintain robust and highly transparent commercial supply relationships.

Anti Bribery & Corruption

Our Anti-Bribery and Corruption Policy forms part of our management framework and is a critical component of our corporate vision, mission and values. It outlines Delta Group's requirements regarding the management of gifts and benefits, which protects our reputation and minimises potential negative consequences. The prevention, detection and reporting of bribery and other forms of corruption are the responsibility of all those working for Delta Group or under its control.

Subcontractor Management

Our prequalification processes and operating policies ensure full regulatory and/or statutory compliance and only prequalified subcontractors will be deployed to Delta Recycling sites. To achieve prequalified status subcontractors must adhere to best practice governance and risk management protocols:

- + Financial Performance
- + Insurances
- + Licenses & Accreditation
- + Risk Management
- + Quality, Safety & Environmental Management
- + Regulatory & Statutory Compliance
- + Safety Statistics
- + Relevant Experience
- + Key Personnel
- + Plant & Equipment

/ Environmental

Carbon Management

We aspire to play an active role in Australia's transition to Net Zero emissions by 2050. To help inform our own emissions reduction targets, as well as to meet our (and our client's) obligations under the Australian Government NGER Scheme, Delta Group has established an emissions monitoring and reporting system encompassing our diversified contracting services. We currently monitor and report on Scope 1 and Scope 2 emissions, with ongoing development of Scope 3 emissions monitoring in step with government policy settings.

Resource Recovery

Our waste management and resource recovery capabilities are built upon 30 years of experience and long standing, trusted relationships with accredited secondary market processors as well as reputable global commodity traders.

All Delta Group sites operate under approved conditions which maintain the highest level of quality control for incoming materials, reprocessing and finished product sales. Our range of eco-products are independently NATA tested and certified to conform to VicRoads Specifications.

Reclaimed Building Materials & Eco Products

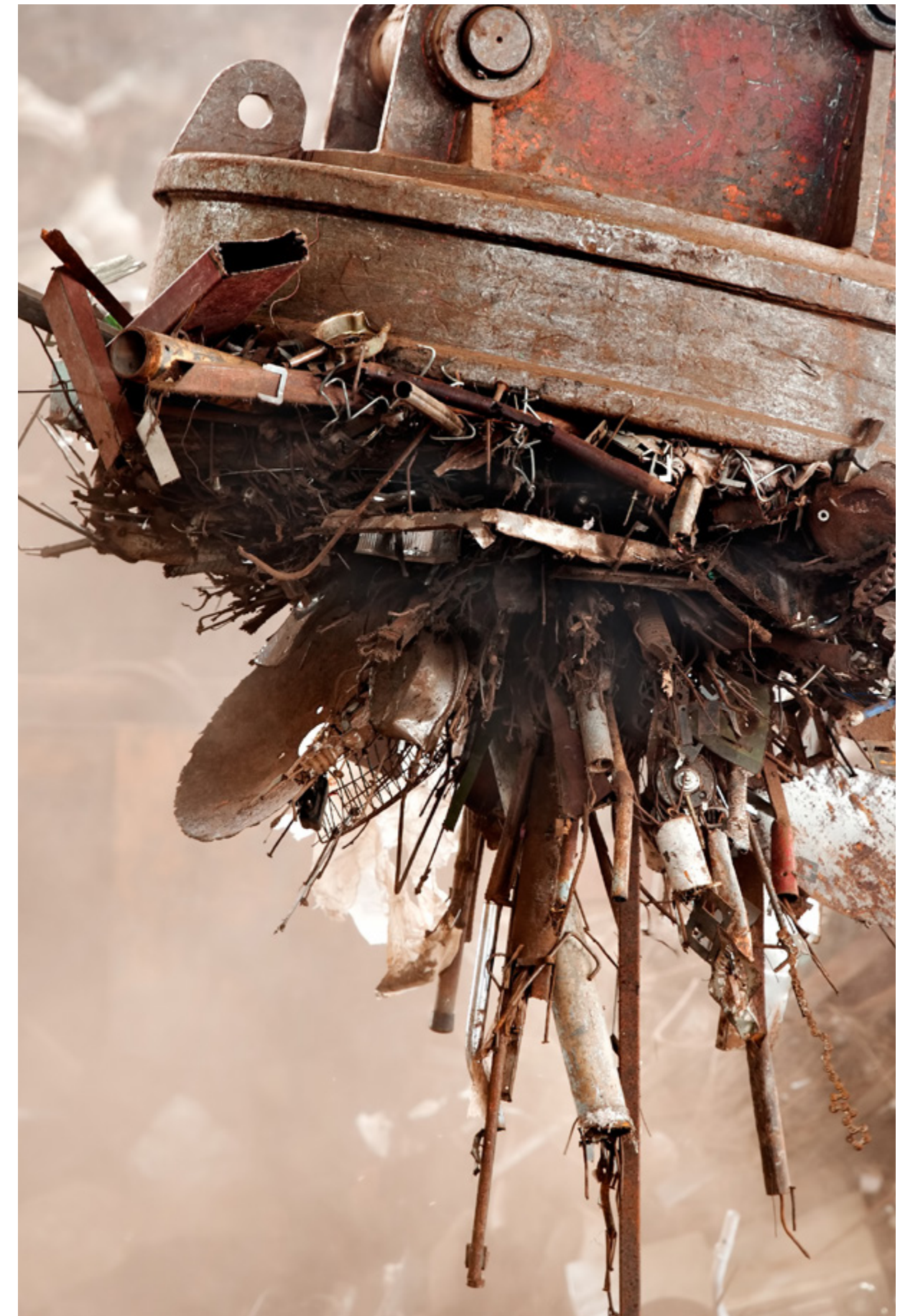
- + Class 2, 3 & 4 Crushed Concrete
- + General Concrete Aggregate
- + General & Gabion Fill
- + Road & Sub-base Material
- + Architectural & Furniture Grade Timber
- + Timber Mulch

Materials Solution Management

Delta Group is a major shareholder in Eastern Plant Hire (EPH) and Earth Solutions Group (ESG).

Founded in 1996, EPH is Australia's largest materials logistics broker and specialises in the collection, cartage and relocation of construction waste materials and spoil in Victoria, New South Wales and Queensland.

ESG has been providing land remediation strategies and management solutions, including long term cleanfill sites, to meet the needs of residential, leisure, agricultural and industrial project developments for more than twenty years.



Company information

Registered Business Name

Delta Rent Pty Ltd

Trading Name

Delta Rent

ABN | ACN

24 116 501 725 | 116 501 725

Directors

Con Petropoulos

Management

Phillip Agius, General Manager

Registered Office Address

577 Plummer Street, Port Melbourne VIC 3207

- p 1300 793 071
+61 3 9646 8277
- f +61 3 9646 6877
- e rent@deltagroup.com.au
- w deltarent.com.au

Offices

HEAD OFFICE Melbourne

577 Plummer Street, Port Melbourne VIC 3207
p. 03 9646 8277
e. rent@deltagroup.com.au

Sydney

83 Bourke Road, Alexandria NSW 2015
p. 02 8339 0588
e. rent@deltagroup.com.au

Brisbane

Suite 1, Level 3, 33 Remora Road
Hamilton QLD 4007
p. 07 3268 5395
e. rent@deltagroup.com.au

Latrobe Valley & Gippsland

25 Hotham Street, Traralgon VIC 3844
p. 03 9646 8277
e. rent@deltagroup.com.au

Adelaide

33-43 Port Road, Thebarton SA 5031
p. 08 8351 3620
e. rent@deltagroup.com.au

Hunter Valley

Unit 2, 42 Wermol Street
Kurri Kurri 2327
p. 02 8339 0588
e. rent@deltagroup.com.au

SHAPING TOMORROW SHAPING TOMORROW SHAPING TOMORROW SHAPING TOMORROW SHAPING TOMORROW



deltarent.com.au